



Digital Medical Scope
VersaCam™ α

US Edition



THE ART OF EYE CARE



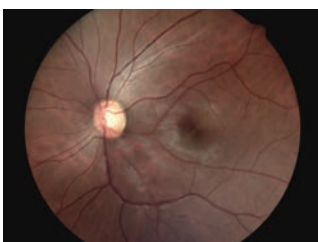
VersaCam™ α
Digital Medical Scope

The Versatile, Automated Portable Fundus Imaging Unit

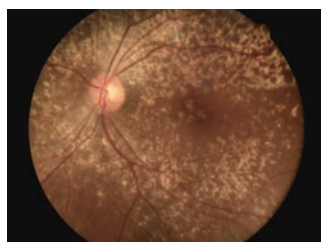
The VersaCam™ α, designed specifically for the fundus imaging, provides high quality images with simple functionality. The lightweight and compact design allows easy portability from room to room or center to center, enhancing patient convenience. This portable unit with intuitive user functionality means fundus screenings can be performed virtually anywhere regardless of whether the patient is sitting or supine.



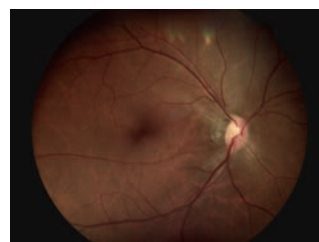
High Quality Imaging



Normal



Age-related macular degeneration



Glaucoma

The 5-megapixel clear-color camera with 45° horizontal angle of view (40° vertical) provides high quality digital imaging.

Excellent Portability



Lightweight and compact design

The VersaCam™ α is easily portable, weighing only 445 g including the ophthalmoscope adapter.

Rechargeable long lasting battery

A rechargeable lithium-ion battery provides up to 3 hours of continuous operation.

Handy carrying case

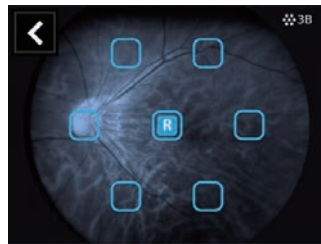
The VersaCam™ α is easily portable in a compact carrying case.

Easy Image Capture and Review



Auto focus / Auto shot

Auto focus and auto shot enable simple button free operation. If necessary, you can switch to manual mode for capture.



Internal fixation lamps

7 internal fixation lamps equipped with the VersaCam™ α allow stable fixation during measurement.



Color LCD touch screen

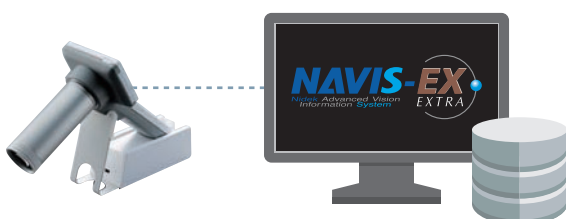
3.5-inch monitor allows easy review of the fundus images.



Peripheral devices (optional)

The VersaCam™ α can be attached to a slit lamp with a slit lamp attachment.

Data Transfer and Management



Data from VersaCam™ α can be transferred to and managed by the NAVIS-EX, image filing software for NIDEK devices.

- DICOM connectivity
- Panorama photography

VersaCam™ α Specifications

Type	Non-mydratic
Angle of view	45° (horizontal), 40° (vertical)
Camera resolution	5 megapixel CMOS
Minimum pupil diameter	ø3.5 mm
Focus range	-20 to +20 D
Focus	Auto, manual
Fixation	7 internal fixation lamps (LED)
Display	3.5-inch LCD touch screen
File format	JPEG (still image), H.264 (video)
Interface	Mini USB, AV out port
Memory	8 GB SD card
Power supply	Lithium-ion rechargeable battery AC 100 to 240 V 50 / 60 Hz
Dimensions / Mass	
Main body	89 (W) x 40 (D) x 203 (H) mm / 285 g 3.5 (W) x 1.6 (D) x 8 (H)" / 0.63 lbs.
Ophthalmoscope	118 (L) x 43 (Dia.) mm / 160 g 4.6 (L) x 1.7 (Dia.)" / 0.35 lbs.
Charging station	56 (W) x 166 (D) x 106 (H) mm / 370 g 2.2 (W) x 6.5 (D) x 4.2 (H)" / 0.82 lbs.
Optional accessories	External fixation lamp, foot switch, slit lamp attachment

Product / Model name: Digital Medical Scope DS-20

Caution: U.S. Federal Law restricts this device to sale, distribution, and use by or on the order of a physician or other licensed eye care practitioner.

Specifications may vary depending on circumstances in each country.

Specifications and design are subject to change without notice.



NIDEK INC.
2040 Corporate Court
San Jose, CA 95131, U.S.A.
TEL: +1-800-223-9044
(US only)
URL: <http://usa.nidek.com>

**HEAD OFFICE
(International Div.)**
34-14 Maehama, Hiroishi
Gamagori, Aichi
443-0038, JAPAN
TEL: +81-533-67-8895
URL:
<http://www.nidek.com>
[Manufacturer]

**TOKYO OFFICE
(International Div.)**
3F Sumitomo Fudosan Hongo
Bldg., 3-22-5 Hongo, Bunkyo-ku,
Tokyo 113-0033, JAPAN
TEL: +81-3-5844-2641
URL: <http://www.nidek.com>

NIDEK S.A.
Europarc,
13 rue Auguste Perret,
94042 Créteil, FRANCE
TEL: +33-1-49 80 97 97
URL: <http://www.nidek.fr>

NIDEK TECHNOLOGIES S.R.L.
Via dell'Artigianato,
6/A, 35020 Albignasego (Padova),
ITALY
TEL: +39 049 8629200 / 8626399
URL: <http://www.nidektechnologies.it>

NIDEK (SHANGHAI) CO., LTD.
#915, China Venturetech Plaza,
819 Nanjing West Rd, Jing An
District, Shanghai 200041,
CHINA
TEL: +86 021-5212-7942
URL: <http://www.nidek-china.cn>

NIDEK SINGAPORE PTE. LTD.
51 Changi Business Park
Central 2, #06-14, The
Signature 486066,
SINGAPORE
TEL: +65 6588 0389