



Non-Mydriatic Auto Fundus Camera

AFC-330

U.S. Edition



THE ART OF EYE CARE

The Advanced Fundus Camera

What is an advanced fundus camera? It is a camera that is sophisticated, highly-developed, and user-friendly.

The AFC-330 speaks for itself.

The AFC-330 has a built-in camera and computer, automated photography functions, multiple data management utilities, and easy-to-use operator assist functions. These advanced features make fundus photography easier for screening and diagnosis.

All in One with Built-in Camera and Computer

The AFC-330 has an integrated CCD camera and microcomputer in one compact unit without requiring an external camera and PC. It eliminates complicated assembly and wiring during installation and is virtually "ready to use out of the box".

The built-in 12-megapixel CCD camera offers high quality fundus images and the microcomputer enables easy data management including auto print / export.

This compact camera enhances the portability, space-saving, and efficiency of the practice.



Tilttable 8.4-inch Color LCD Touch Screen



The 8.4-inch color LCD touch screen displays windows with intuitive menus and icons for ease of use.

An on-screen keyboard enables an operator to input patient data easily without disrupting the workflow in the clinic.

Five Automated Functions for Enhanced Ease-of-Use

The AFC-330 adds auto print / export to four automated functions from its predecessor, the AFC-230 / 210.

With five automated functions - 3-D auto tracking, auto focus, auto switching from anterior eye to fundus, auto shot, and auto print / export - the AFC-330 enables seamless photography from start to finish. The AFC-330 enhances ease-of-use and ensures high quality clinical photography.

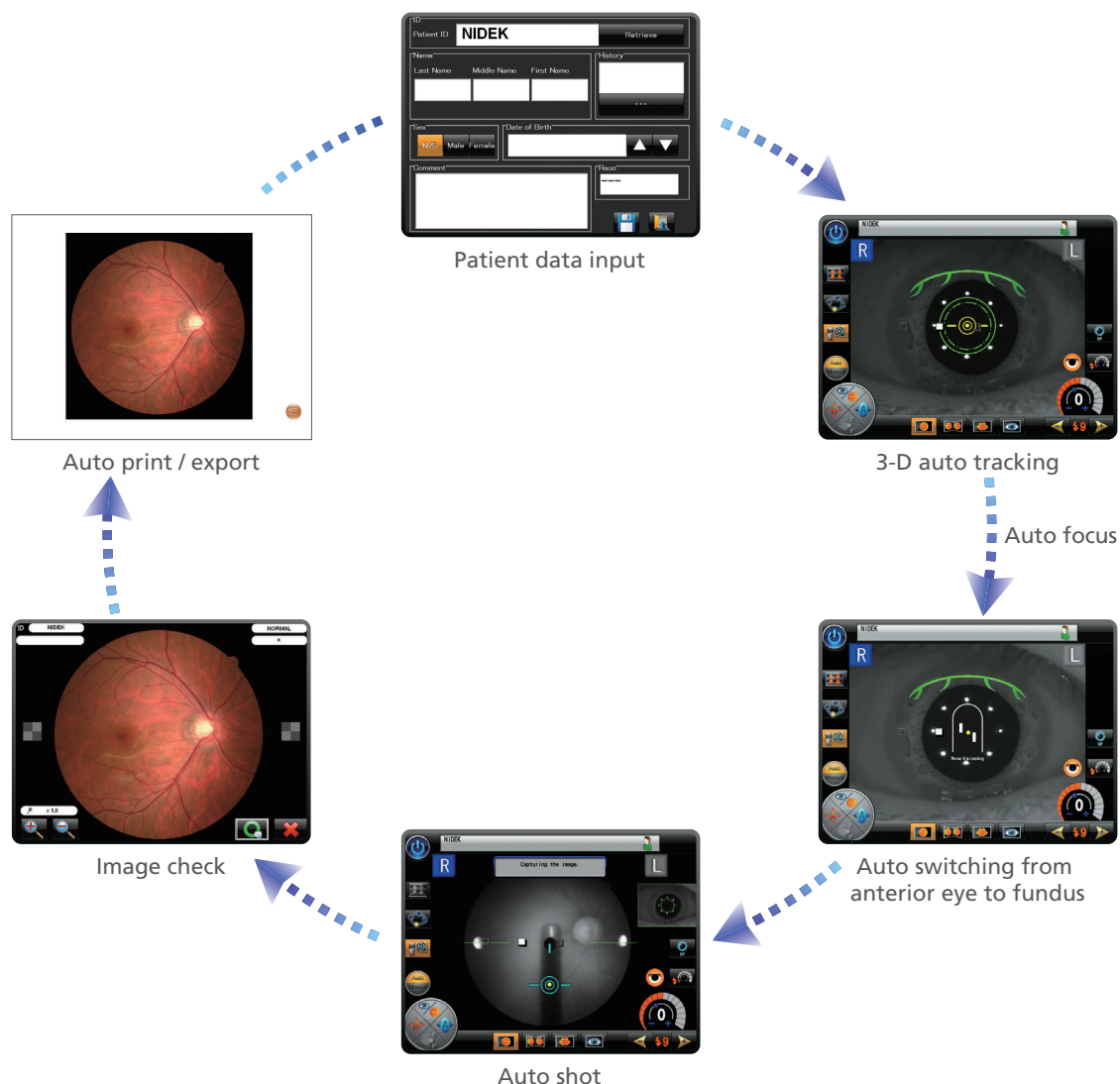
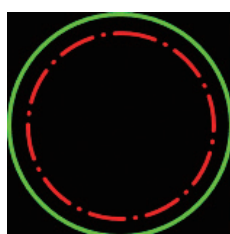
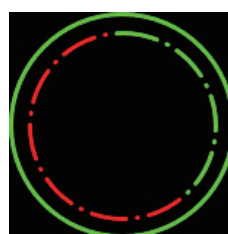


Image Capture Interval Indicator

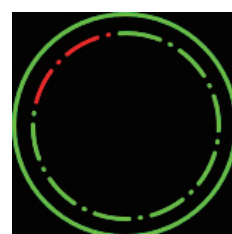
The image capture interval indicator displays the lapsed time after a shot, which helps an operator wait for an eye to recover from pupil constriction. The interval time can be set from 1 to 10 minutes in 1 minute increments.



Full interval time remaining



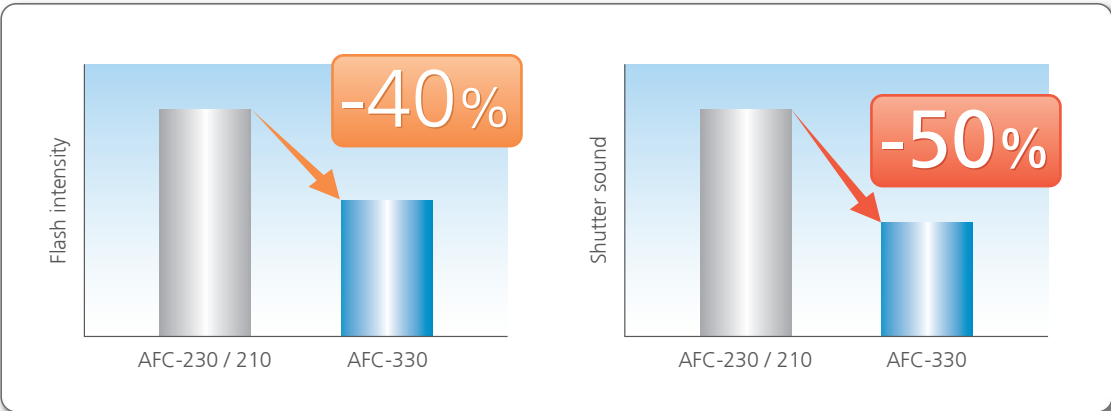
6/10 interval time remaining



2/10 interval time remaining

Low Flash Intensity and Quiet Shutter Sound

The AFC-330 reduces flash intensity by 40% and sound of the shutter by 50% compared to its predecessor, the AFC-230 / 210, which enhances patient cooperation and enables seamless fundus photography.



Data Management Utilities

Images that are captured and associated with patient data are saved, transferred, and managed with a USB memory or an external PC connected to the NAVIS-EX network. NAVIS-EX is an image filing software, which networks the AFC-330 and other NIDEK fundus imaging devices, the F-10 and RS-3000 series.

< Stand-Alone >

The diagram shows the AFC-330 fundus camera on the left. A blue arrow with 'USB' written below it points from the camera to a USB drive on the right.

Input of patient information:
Touch screen keyboard
Data storage:
USB* memory
Image print:
External printer* with USB connection

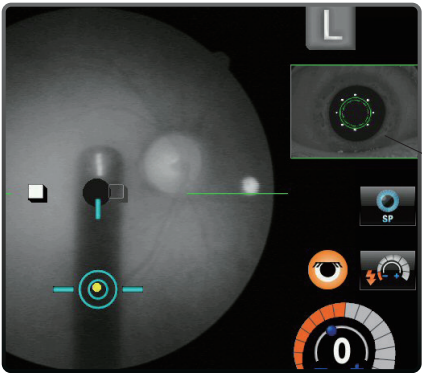
*Driver software needs to be installed for use of the USB memory and external printer.

< Connection with External PC >

The diagram shows the AFC-330 fundus camera on the left and a laptop on the right. A blue double-headed arrow with 'Network' written below it connects the camera to the laptop. The laptop screen displays a fundus image.

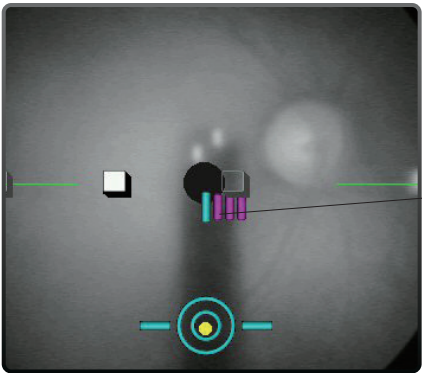
Input of patient information:
External PC with NAVIS-EX
Touch screen keyboard
Data storage:
External PC with NAVIS-EX

Monitor and Indicator for Operator Assist



Anterior eye monitor

The anterior eye monitor inset in the fundus observation screen allows an operator to constantly verify alignment.



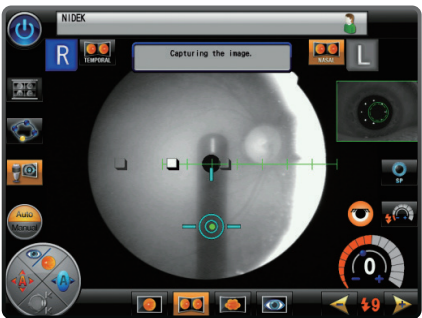
Focus split indicator

The focus split indicator shows the amount of focus deviation in the fundus observation screen, which helps an operator to manually focus the AFC-330 on the fundus.

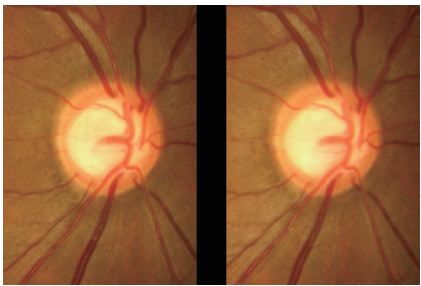
Navigation of Stereo and Panorama Photography

The AFC-330 navigates stereo and panorama photography with target marks displayed on observation screen, which enables an operator to easily capture stereo images and the image series for a panorama composition*.

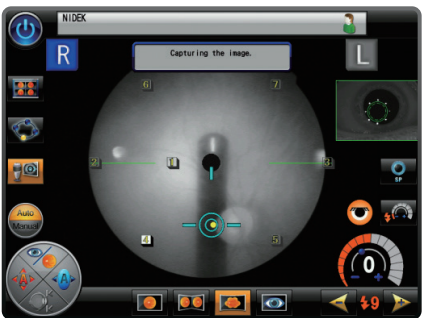
* Stereo image observation and panorama composition are available with the NAVIS-EX software.



Navigation of stereo photography



Stereo images



Navigation of panorama photography



Panorama

AFC-330 Specifications

Type	Non-mydriatric fundus camera
Angle of view	45° (33° in small pupil photography mode)
Working distance	45.7 mm (from objective lens to cornea)
Minimum pupil diameter	ø4.0 mm (ø3.3 mm in small pupil photography mode)
Dioptric compensation for patient's eyes	-33 to +35 D total -33 to -7 D with minus compensation lens -12 to +15 D with no compensation lens +11 to +35 D with plus compensation lens
Focusing method	Infrared focus split alignment Adjustable range: -12 to +15 D
Light source	
For observation	Halogen lamp 12 V 50 W
For capturing	Xenon flash lamp 300 Ws
Flash intensity	17 levels from F1 (F4.0 +0.8 EV) to F17 (F16 +0.8 EV) 0.5 EV increments
Internal fixation target	LED (maximum 9 points)
External fixation target	Free-arm (optional)
Horizontal movement	Forward / backward: 40 mm Right / left: 85 mm
Vertical movement	32 mm
Vertical movement of the chinrest	62 mm (motorized)
Auto tracking	X-Y-Z direction
Auto shot	Available
Camera	Built-in 12-megapixel CCD camera
Display	Tilttable 8.4-inch color LCD touch screen
Interface	LAN, USB 2.0
Power supply	AC 100 to 240 V 50 / 60 Hz
Power consumption	150 VA
Dimensions / Mass	316 (W) x 518 (D) x 579 (H) mm / 29 kg 12.4 (W) x 20.4 (D) x 22.8 (H) " / 64 lbs.

Product / Model name: NON-MYDRIATIC AUTO FUNDUS CAMERA AFC-330
Caution: U.S. Federal Law restricts this device to sale, distribution, and use by or on the order of a physician or other licensed eye care practitioner.
Specifications may vary depending on circumstances in each country.
Specifications and design are subject to change without notice



NIDEK INC.
6601 Cascades Court, Suite 130
The Colony, TX 75056, U.S.A.
TEL: 1-800-223-9044 (U.S. Only)
URL: usa.nidek.com

HEAD OFFICE
(International Div.)
34-14 Maehama, Hiroishi
Gamagori, Aichi 443-0038,
JAPAN
TEL: +81-533-67-8895
URL: <http://www.nidek.com>
[Manufacturer]